
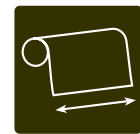
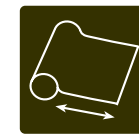


# Stoneplex Concrete

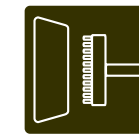
Architects  Paper



Breite: 100 cm  
Width: 100 cm



Länge: 280 cm  
Length: 280 cm



Wand einkleistern  
Paste the wall



Kleber  
„Stoneplex G 1000“  
Adhesive  
„Stoneplex G 1000“



Gewicht:  
Concrete 1: 2600 g/m<sup>2</sup>  
Concrete 2: 4500 g/m<sup>2</sup>  
Weight:  
Concrete 1: 2600 sqm  
Concrete 2: 4500 sqm



Sonderanfertigung  
auf Anfrage  
Special commissions  
on request



Muster auf Anfrage  
Samples on request



Brandschutzzeugnis  
auf Anfrage  
Fire classification  
on request

## Stoneplex Concrete – Features



Vliesrücken  
Non-woven back



Verarbeitung auf Stoß  
Butt join following length



Verarbeitung mit Silikonfuge  
Hanging with gap

### Contact

Südstraße 47  
D-51645 Gummersbach  
Germany

Phone: +49 (0) 22 61 - 54 23 42  
Fax: +49 (0) 22 61 - 54 23 69

Internet: [www.architects-paper.com](http://www.architects-paper.com)

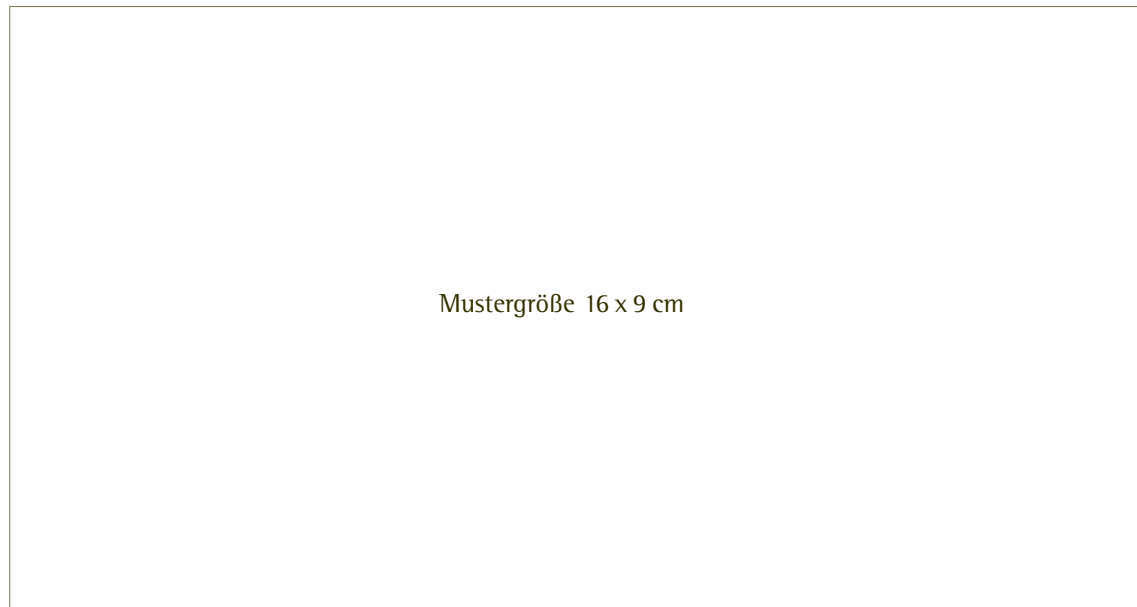
Made in Germany.

**DESIGNERS-home.com**  
maike metz - interior design  
rheinstrasse 99.4  
64295 darmstadt

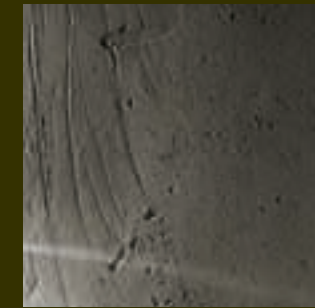
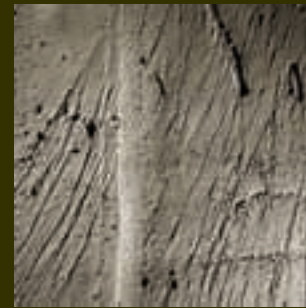
tel. 0049 (0)6151 - 870 34 32  
fax 0049 (0)6151 - 860 69 88

info@designers-home.com

Architects  Paper



Stoneplex Concrete 1

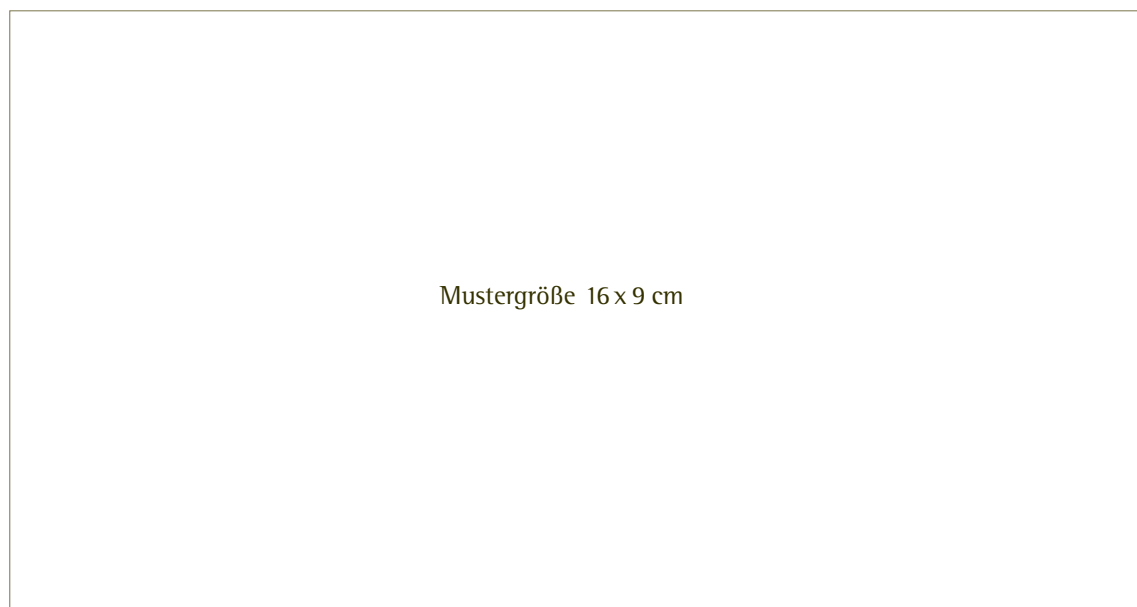


Stoneplex Concrete ist eine flexible Betonreproduktion, welche mit mineralischen Füllstoffen gefertigt wird. Die robuste und naturgetreu nachempfundene Oberfläche wirkt zudem schallabsorbierend und wärmedämmend im Vergleich zu Stahlbeton.

*Stoneplex Concrete is a flexible imitation concrete which is made with mineral filler.*

*The robust, true-to-nature surface has sound-proofing and warmth insulation properties in comparison with reinforced concrete.*

# Stoneplex Concrete



Stoneplex Concrete 2

